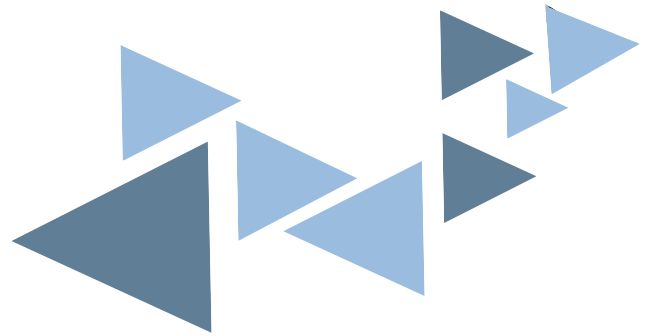


LEADING THE WAY IN UPVC FINS



+91 8450965094
+91 9930724665



info@finpro.in
finspro01@gmail.com



www.finspro.in



Your Trusted Partner in uPVC Solutions

At FinsPro, we craft innovation into every line. Specializing in the design, manufacturing, and installation of premium uPVC fins, we deliver smart solutions that combine functionality with striking aesthetics. Our fins not only enhance facade design but also offer effective sun shading, improved natural ventilation, and protection against rainwater seepage—making buildings more energy-efficient and weather-resilient.

Engineered for durability, low maintenance, and eco-friendliness, our products are tailored to meet the unique demands of modern architecture.

Let's shape smarter, sustainable, and more breathable buildings—together.

www.finspro.in

About Company.

FinsPro is a trusted name in the architectural facade industry, specializing in the manufacturing and installation of high-quality uPVC fins. Founded with a vision to blend design, durability, and sustainability, we deliver customized solutions for commercial and residential buildings, including parking podiums, staircases, elevation facades, and more.

Our UPVC fins are not only aesthetically appealing but also help improve energy efficiency by controlling sunlight exposure and heat. Designed to withstand harsh weather and require minimal maintenance, they are a cost-effective, eco-friendly alternative to traditional materials.

We work closely with architects, builders, and developers to deliver fins that elevate the facade while serving functional purposes such as shading, privacy, and airflow management. With a commitment to precision and customer satisfaction, FinsPro is redefining building exteriors.

www.finspro.in





How We Work

Consultation & Requirement Gathering

We begin by understanding your project goals, design preferences, and technical requirements. Our team conducts a thorough site assessment and collaborates closely with architects and contractors to propose the best UPVC fin solution tailored to your needs.

Design & Manufacturing

Once the concept is finalized, we begin precision manufacturing using high-grade uPVC materials. Our advanced fabrication process ensures consistency, durability, and a sleek finish for every fin.

Delivery & Installation

After a final quality check, the UPVC fins are delivered to the site on time. Our experienced installation team ensures smooth and efficient setup, adhering to all safety standards and aesthetic expectations.

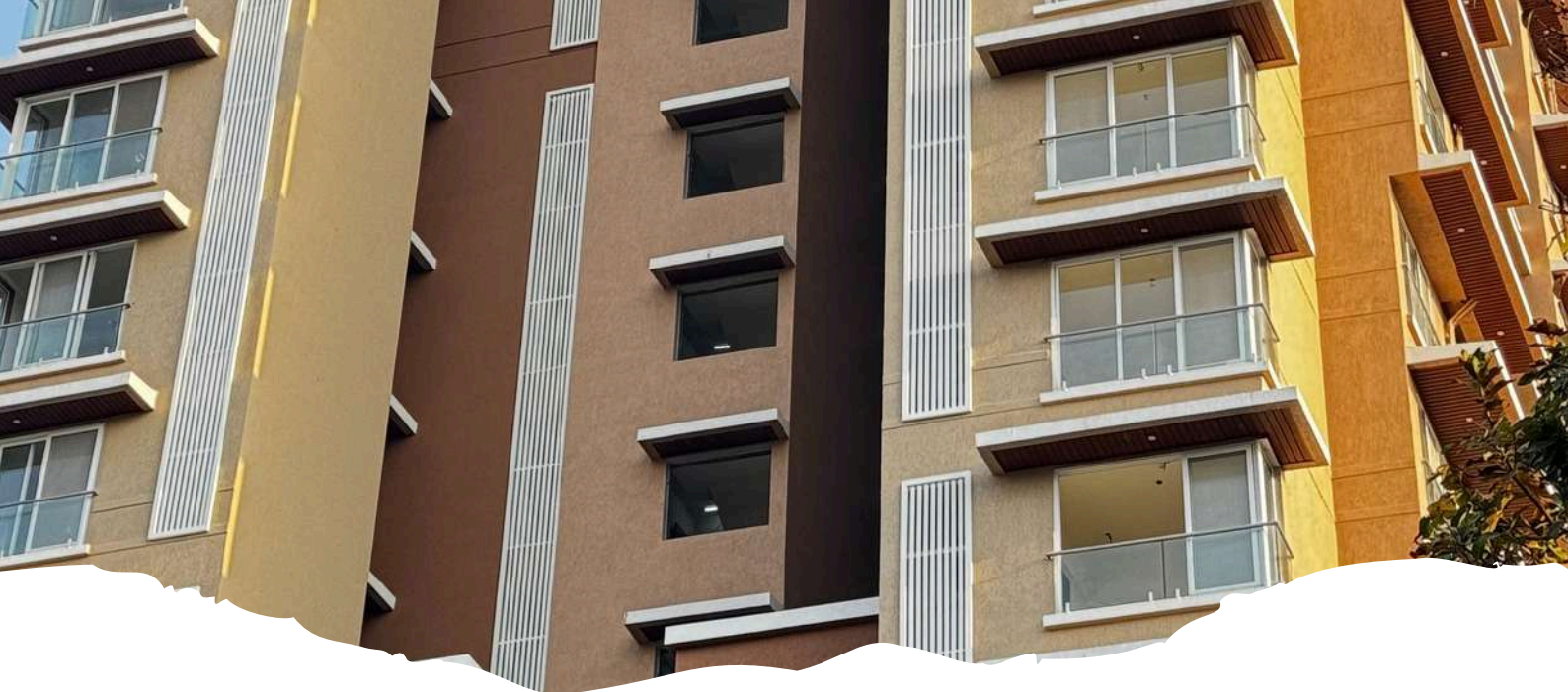
www.finspro.in



Our Service Company.

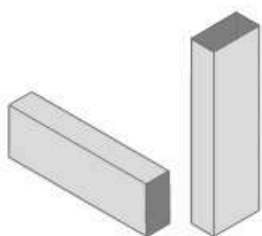
At FinsPro, we specialize in providing **end-to-end UPVC fins solutions** for commercial, residential, and institutional buildings. Our UPVC fins are crafted with precision to meet the growing demand for energy-efficient, durable, and visually appealing façade systems. We work directly with **real estate developers, architects, and construction firms** to deliver tailor-made fins that enhance the structure's aesthetics while offering functional benefits like solar shading, ventilation, and privacy. From the initial design consultation to fabrication and on-site installation, our team ensures **seamless execution and timely delivery** across all scales of projects.

Whether you're developing a high-rise or planning an institutional campus, **FinsPro** is your reliable partner for sustainable and striking architectural elements.

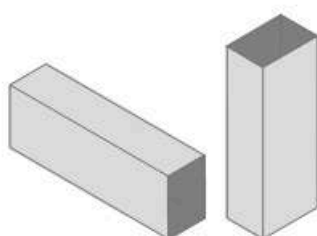


Avialable sizes of

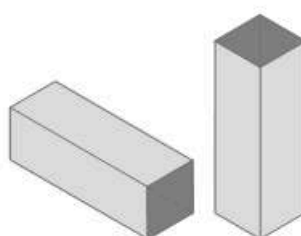
uPVC Fins



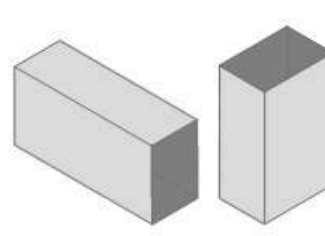
uPVC 25x50
RECTANGULAR PIPE



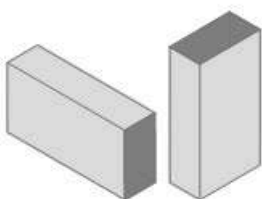
uPVC 40x60
RECTANGULAR PIPE



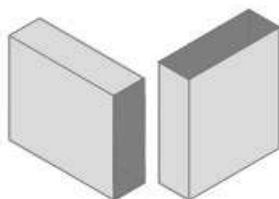
uPVC 50x50
SQURE PIPE



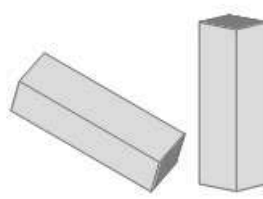
uPVC 50x75
RECTANGULAR PIPE



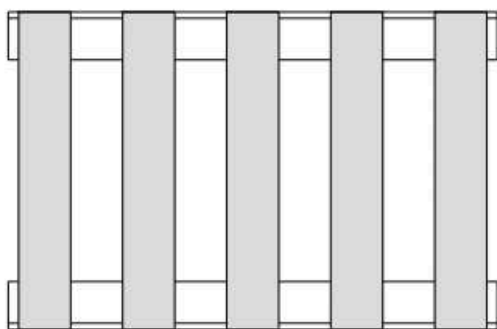
uPVC 50x100
RECTANGULAR PIPE



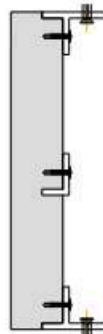
uPVC 50x150
RECTANGULAR PIPE



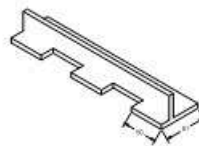
uPVC 70x40
DIAMOND SHAPE (KAJUKATLI)



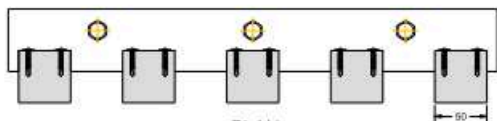
ELEVATION



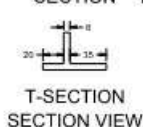
SECTION



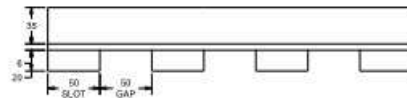
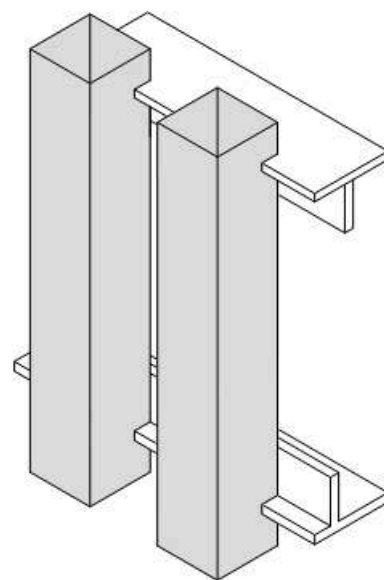
MANUFACTURER OF uPVC PRODUCTS



PLAN



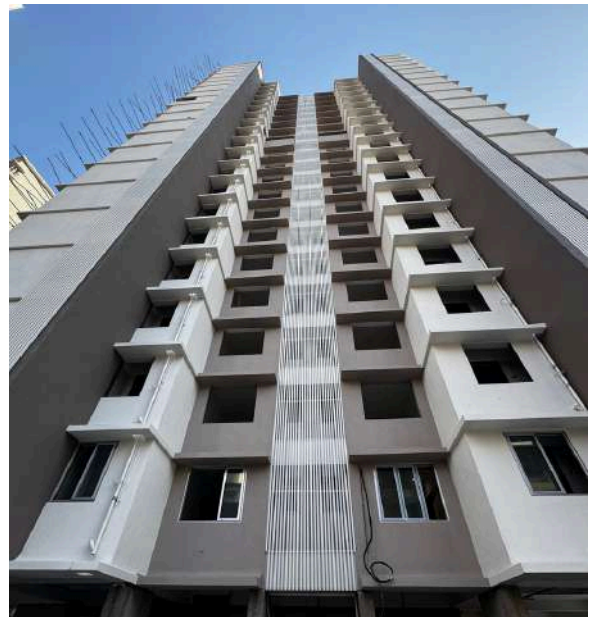
T-SECTION
SECTION VIEW



T-SECTION PLAN DETAILS

Completed Project

Shubhjivan Siaana



Square Shape
50mm x 50mm
x 2mm thk.

Completed Project

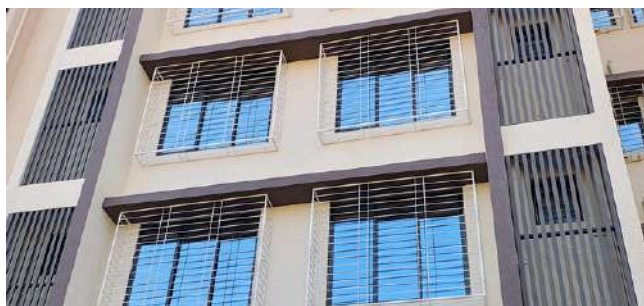
Crescent Heights



Rectangular Shape
25mm x 50mm &
50mm x 75mm
x 2mm thk.

Completed Project

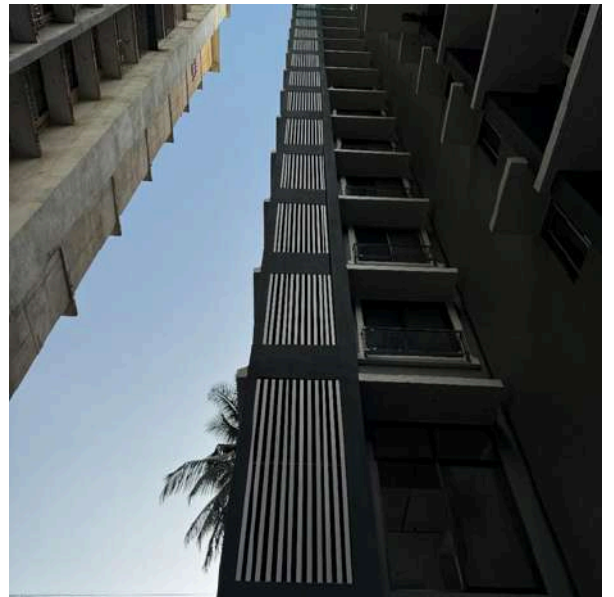
Fia Eklavya



Rectangular Shaape
25mm x 50mm
x 2mm thk.

Completed Project

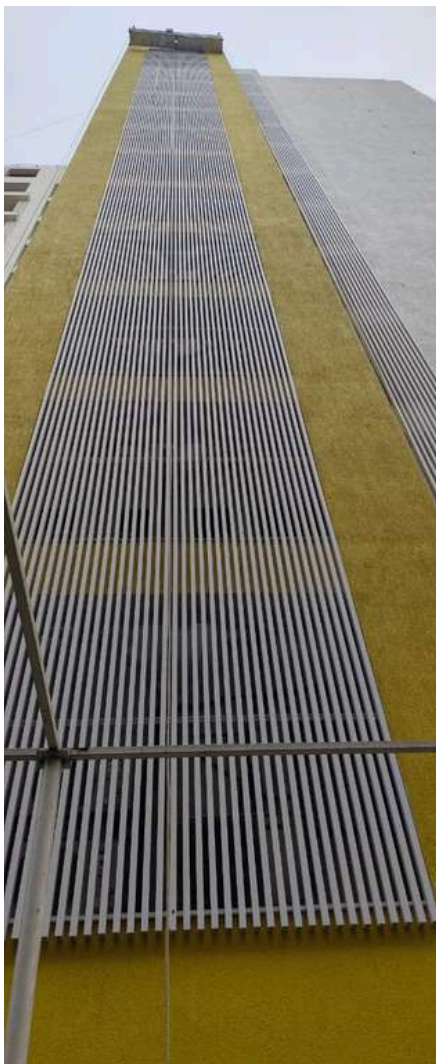
Shimpoli – Borivali
(W)



Square Shape
50mm x 50mm
x 2mm thk.

Completed Project

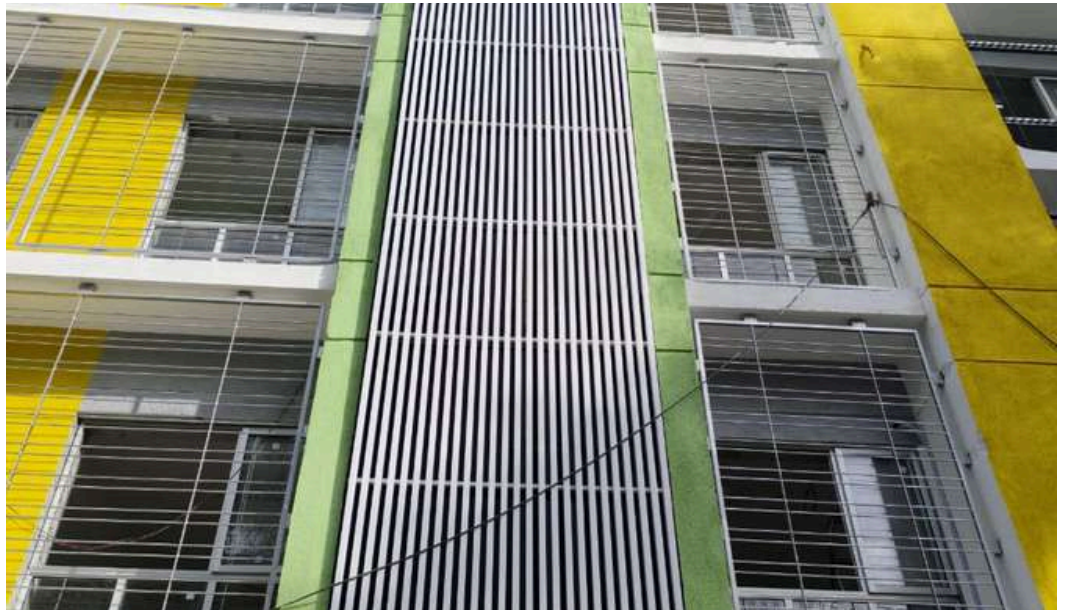
Vibgyor School –
Goregaon Mumbai



Rectangular Shape
40mm x 60mm
x 2mm thk.

Completed Project

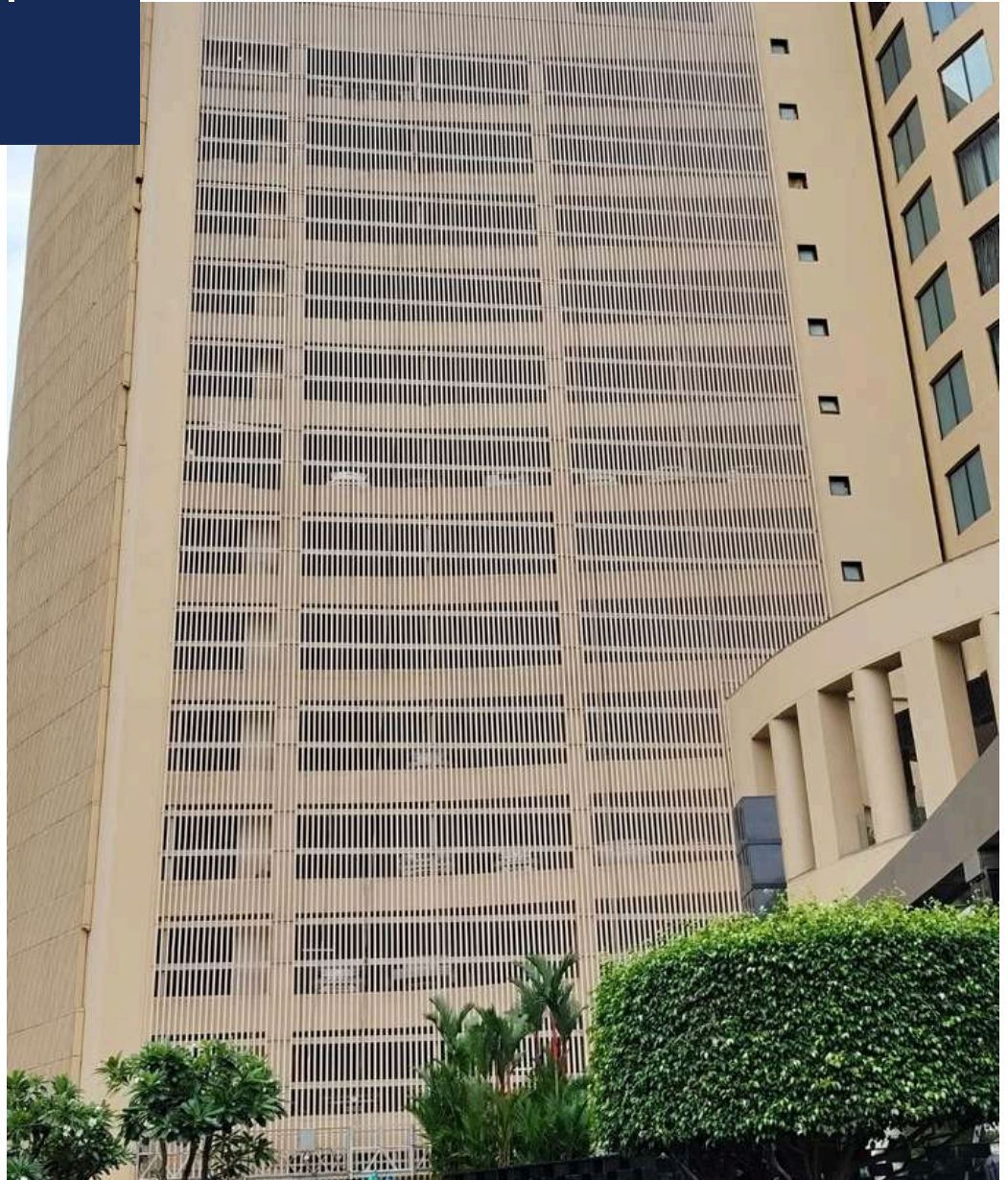
Vibgyor School –
Nagpur



Rectangular Shape
40mm x 60mm
x 2mm thk.

Completed Project

Trident Hotel
Parking –
BKC



Rectangular Shape
50mm x 150mm
x 2mm thk.

Completed Project

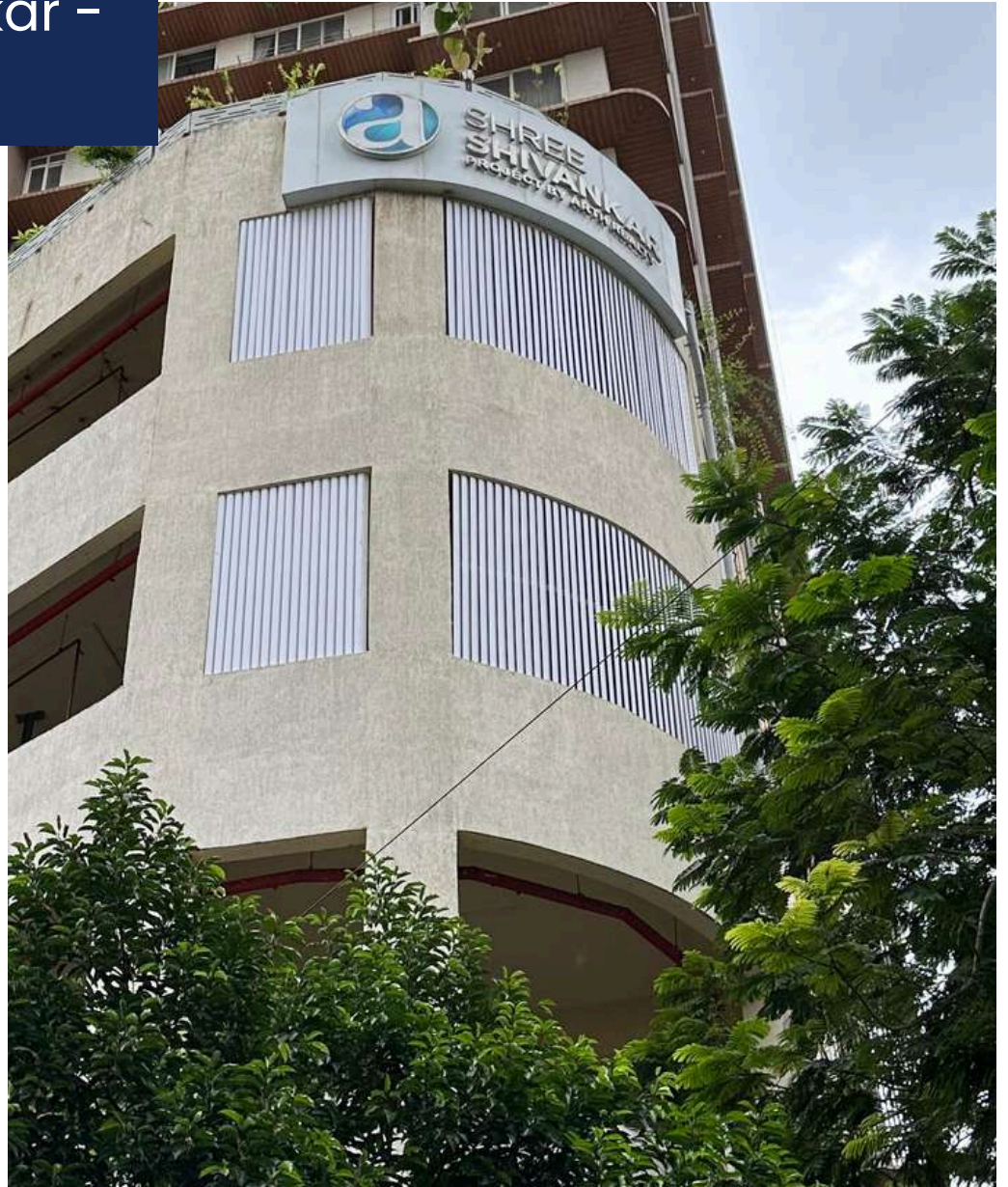
Ashok Nagar



Square Shape
50mm x 50mm
x 2mm thk.

Completed Project

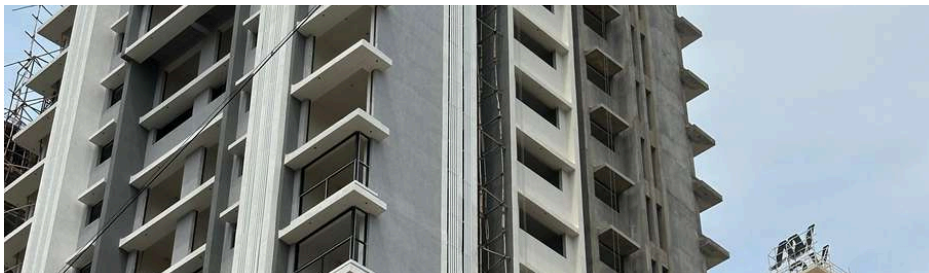
Shree Shivankar –
Matunga



Diamond Shape
52mm x 75mm
x 2mm thk.

Completed Project

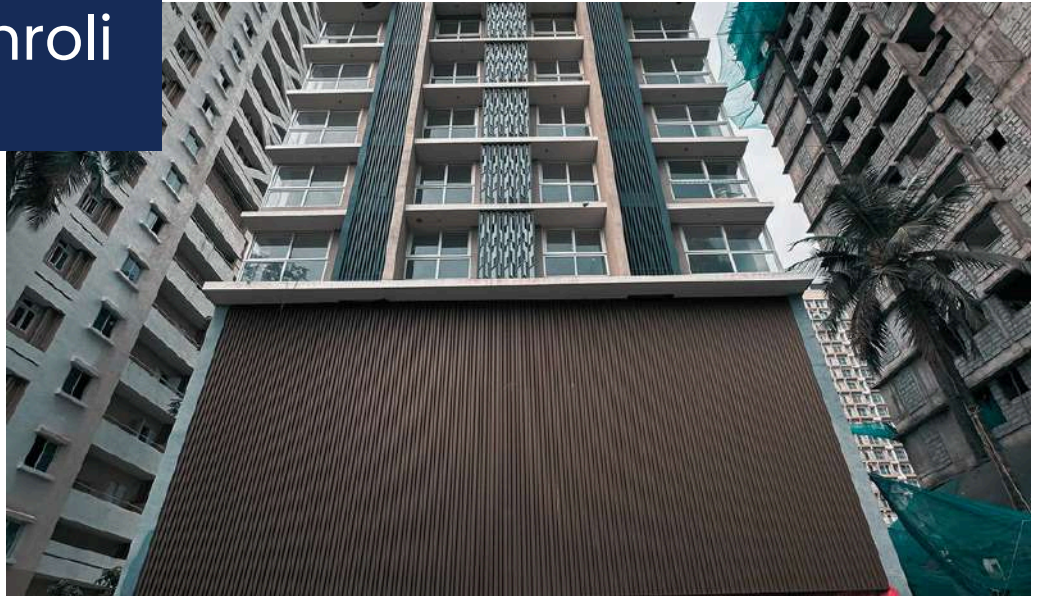
Park Abode –
Dadar



Square & Rectangular
Shape
25mm x 50mm &
50mm x 50mm
x 2mm thk.

Completed Project

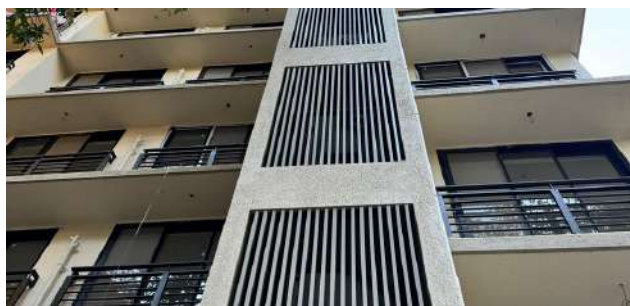
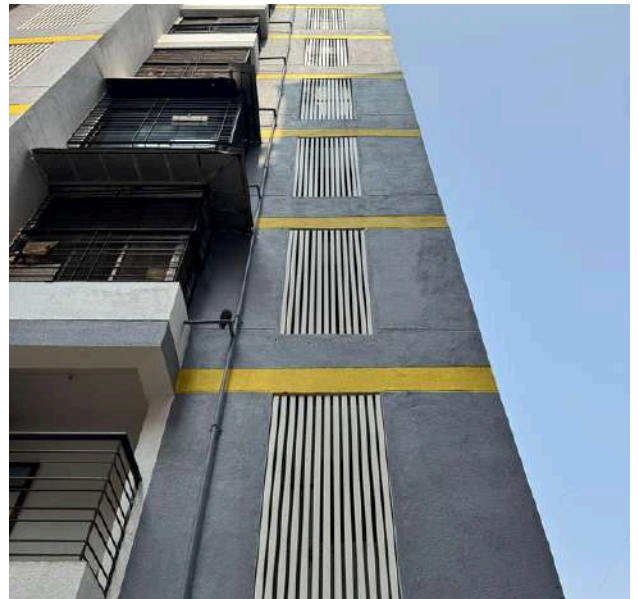
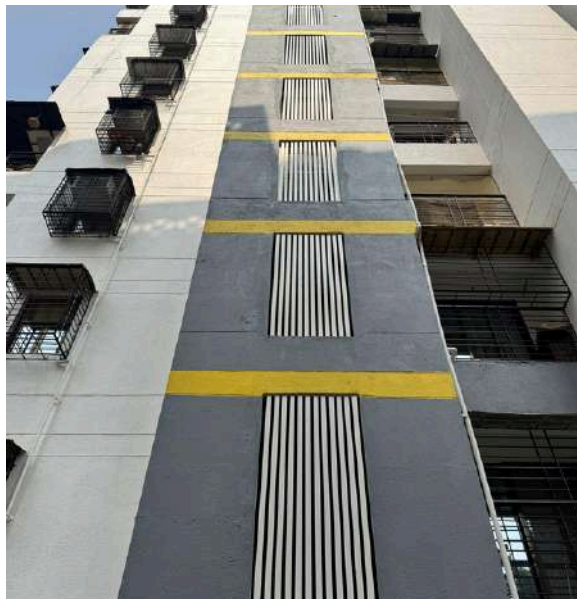
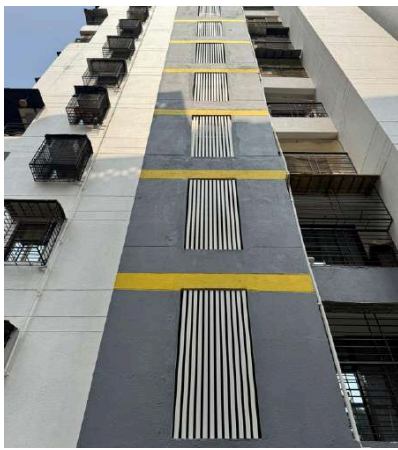
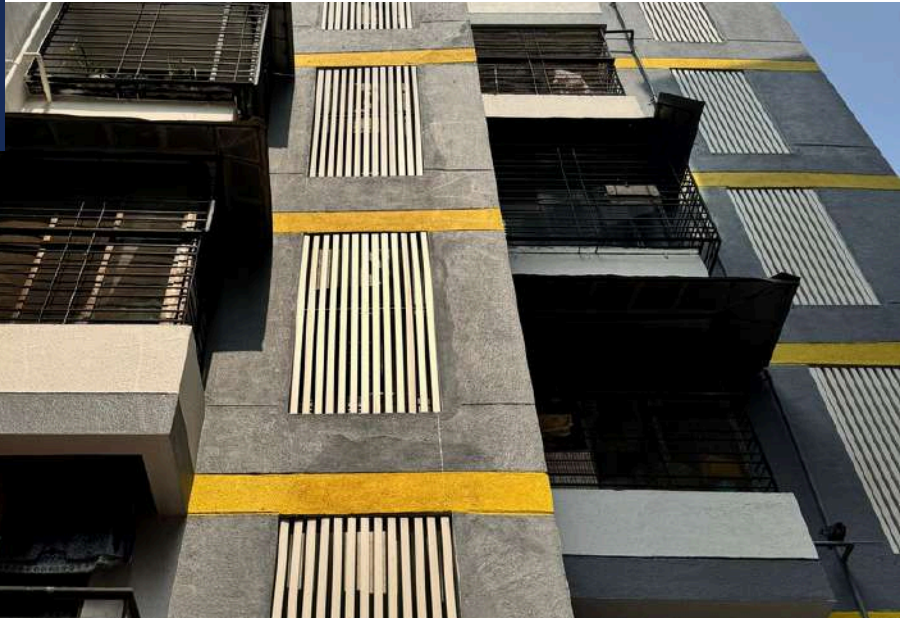
Sparkle – Vikhroli



Diamond Shape
52mm x 75mm
x 2mm thk.

Completed Project

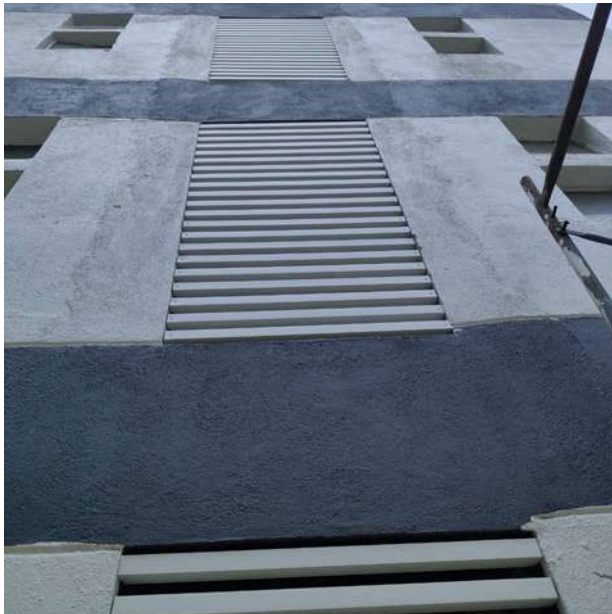
Northan Star



Square Shape
50mm x 50mm
x 2mm thk

Completed Project

BPCL Colony –
Chembur



Square Shape
50mm x 50mm
x 2mm thk

Liquid Powder Coating by Rhenoplast

The original. water-based PVC-profile-coating. Smooth or structured texture:-

From the pioneer of eco-friendly, water-based special coatings for uPVC profiles since 1985. **Rhenoplast** is no ordinary paint. It bonds inseparably with the subsurface in a chemical way. This allows **Rhenoplast** to follow all movements of the subsurface.

Cool Coating makes UV-/IR-stable:-

Specialty pigments ensure highest durability against UV-light and IR-heat radiation in the Rhenocoll cool-coating-system. The temperature loading of the component will be reduced. The stability of the constructions will be sustainably supported.

Decorative design – interior + exterior:-

The multitude of color tones leaves a lot of room for creativity. Colorful opaque tones, structural paint, metallic tones, aluminium effect and "Royal effects".

No special care needed:-

The coating forms a closed film and therefore dirt cannot penetrate. For the durability of the surface special care is not necessary. If you want to restore the shine a care product is available.

Easy cleaning:-

Thanks for the Easy to Clean effect, cleaning can simply be done with common cleaning products and water.

Long-term warranty:-

Excellent adhesion and elasticity. No cracks, no flaking. Excellent scratch resistance. Suitable for surfaces in constant use.

Easy Processing

No mixing, one-component product. No odor nuisance, no fire hazard.

- Clean profile with **Rhenoplast HR1**
- Apply **Rhenoplast KP1+** colors in one coat
- For hand coating and machine processing



Tested quality.

- ASTM D714
- ASTM D523 @ 60°
- ASTM D3363
- ASTM D2247, 1500 hrs
- ASTM B117, 1500 hrs
- DIN EN ISO 2409
- ASTM 4226
- ASTM D1308
- ASTM G-53
- ASTM D-3359
- ASTM 4803
- DIN EN 478

The Company Values



At FinsPro, our core values shape the way we design, manufacture, and install uPVC fins. We are committed to delivering high-quality, durable, and visually striking solutions that meet modern architectural demands. Quality, innovation, and precision are at the heart of our process, ensuring that every project we undertake reflects our dedication to excellence. We believe in using sustainable materials and efficient practices to contribute to environmentally responsible construction.

Our customer-first approach drives us to provide tailored solutions, transparent communication, and timely execution on every project. We value integrity, professionalism, and long-term relationships with our clients and partners. Whether it's a residential or commercial project, we stand by our promise to deliver reliable results with unmatched craftsmanship and a strong sense of accountability.

www.finspro.in

Let's Work Together

At FinsPro, we don't just supply uPVC fins—we bring your architectural vision to life. Whether you're designing a modern façade, enhancing airflow, or seeking a durable and stylish shading solution, we're here to deliver results that align with your goals. Our team works closely with architects, builders, and developers to provide customized, high-performance fins that blend functionality with aesthetics.

Partner with us for a seamless experience—from consultation and design to manufacturing and installation. Let's create facades that stand out, last longer, and perform better. Reach out today, and let's build something remarkable together.



9930724665 / 8450965094



info@finspro.in



www.finspro.in



Our Clients



Let's Build Together

Have a project in mind? Let FinsPro bring innovation, durability, and elegance to your façade with our premium UPVC fins.

Specialized in custom solutions tailored for your architectural, commercial, or industrial.

Get In Touch With FinsPro

☎ 8450965094

✉ info@finspro.in

🌐 www.finspro.in

📍 Gala No 5 35/3 Minaxi Nagar
Road , Kashigaon Near Gagan Giri
Nagar Kashimira, Miraroad (East)
Maharashtra Thane – 401104

Thank You

Thank you for considering FinsPro.
We look forward to collaborating and
delivering excellence to your next project.

